

PLANNING
FOR OUR FUTURE



HORSHAM DISTRICT
LOCAL DEVELOPMENT FRAMEWORK
TO 2018

**General Development Control
Alternative Policy Boundaries**

November 2006



General Development Control Alternative Policy Boundaries

Local Development Framework

- 1.1 Under the Government's new planning system, instead of producing a single document called a Local Plan the Council is required to prepare a number of 'Local Development Documents'. These documents set out different aspects of the Council's policies for meeting the community's economic, environmental and social needs for the future of the District where this has an impact on the use of land. The Local Development Framework is a 'folder' of these documents.

General Development Control Policies Submission Document

- 1.2 In September 2006 Horsham District Council submitted the General Development Control Policies (Development Plan Document) to the Secretary of State for an Independent Examination. This was followed by a six week period in which representations could be made. During this period some respondents suggested alternatives to the policy boundaries contained within the document. It is a requirement that these alternatives are advertised and consulted upon in order that all information and views are obtained. This document therefore sets out these alternatives for consultation.
- 1.3 Following this period of consultation a Planning Inspector will conduct an Examination into the content of the document and subsequently produce a report containing recommendations which will be binding on the Council. Any changes deemed necessary will be made to the General Development Control Policies Document which will then be adopted as a development plan document, forming part of the Local Development Framework for Horsham District.

General Development Control Alternative Policy Boundaries

- 1.4 The alternative policy boundaries identified in this document are those put forward to the Independent Inspector by respondents to the Submission Document; they are not changes being put forward by the Council. They are proposals that are not currently included in the Submission General Development Control Policies Document; however, the respondent(s) consider they should be included in the document before adoption. The Council will not itself decide whether these changes should be made; that will be a decision for the Inspector.



General Development Control Alternative Policy Boundaries

Previous Assessment

- 1.5 The broader strategic principles and issues surrounding the development control policy boundaries have been examined by the Council through the Sustainability Appraisal & Strategic Environmental Assessment process, background studies, preparation of the policies and the corresponding consultation work undertaken.

Making a Representation

- 1.6 There is a period of 6 weeks from the 3 November to 4.20pm on Friday 15 December for the receipt of representations on this General Development Control Alternative Policy Boundaries document. Any representations made at this stage must relate solely to the advertised alternative policy boundaries in this document and should not include further alternatives or additional comments on the Submission Document.
- 1.7 If you do not wish to see their inclusion you should object to the proposal.
- 1.8 If you wish to see the change in the Submission Document you will need to support the alternative policy boundary in this document.
- 1.9 All the representations made at this stage are for the benefit of an independent Inspector who will conduct the Examination into the Horsham District Council General Development Control Policies Submission Document in the early summer of 2007.
- 1.10 Representations on this document can be submitted to the address overleaf on the Alternative Policy Boundaries representation form available from the Strategic & Community Planning Department or via email, by **4.20pm on Friday 15 December 2006**.

Head of Strategic and Community Planning
Horsham District Council
Park North, North Street
Horsham
West Sussex RH12 1RL

- 1.11 If you have any queries regarding this document, or how to make representations, please contact a member of the Strategic and Community Planning Department at strategic.planning@horsham.gov.uk or by telephoning 01403 215398.



General Development Control Alternative Policy Boundaries

Alternative Policy Boundary Changes listed in Representation Order

APB 5105

Horsham/Southwater Strategic Gap

Respondent requests re-instatement of Areas F and G into the Horsham/Southwater Strategic Gap.

(See Map 1)

APB 5130

Horsham/Southwater and Horsham/Crawley Strategic Gaps

Respondent requests removal of the Horsham/Southwater and Horsham/Crawley Strategic Gaps.

(See Map 2)

APB 5057

Omission of Parsonage Farm, Horsham, as an Employment Protection Zone

Respondent requests designation of Parsonage Farm, Horsham, as an Employment Protection Zone (excluding the Farmhouse).

(See Map 3)

APB 5153

Horsham/Southwater Strategic Gap

Respondent requests that only land south of Horsham (not south-west) should be included in the Strategic Gap

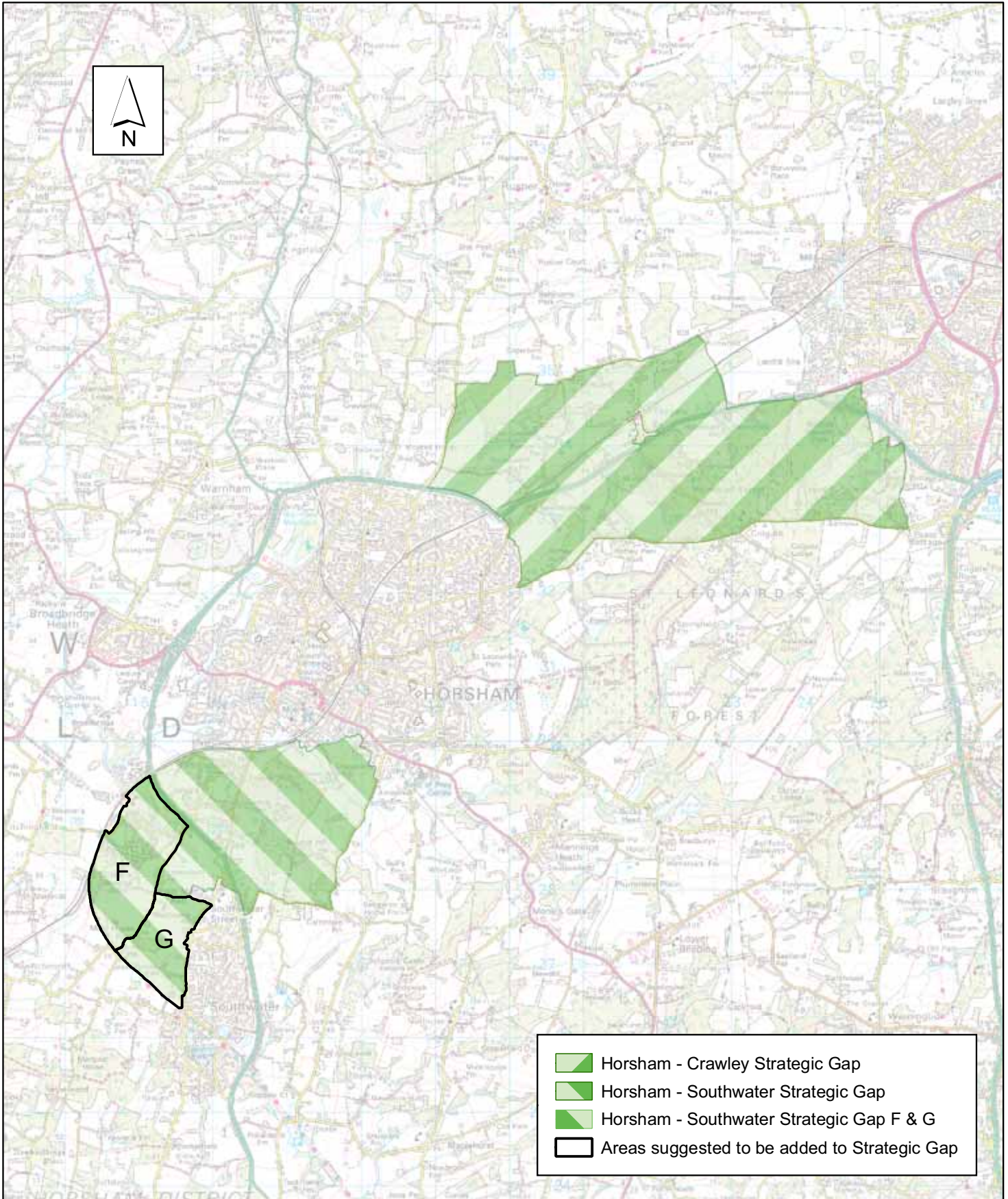
(See Map 4)

APB 5231

Billingshurst Employment Protection Zones

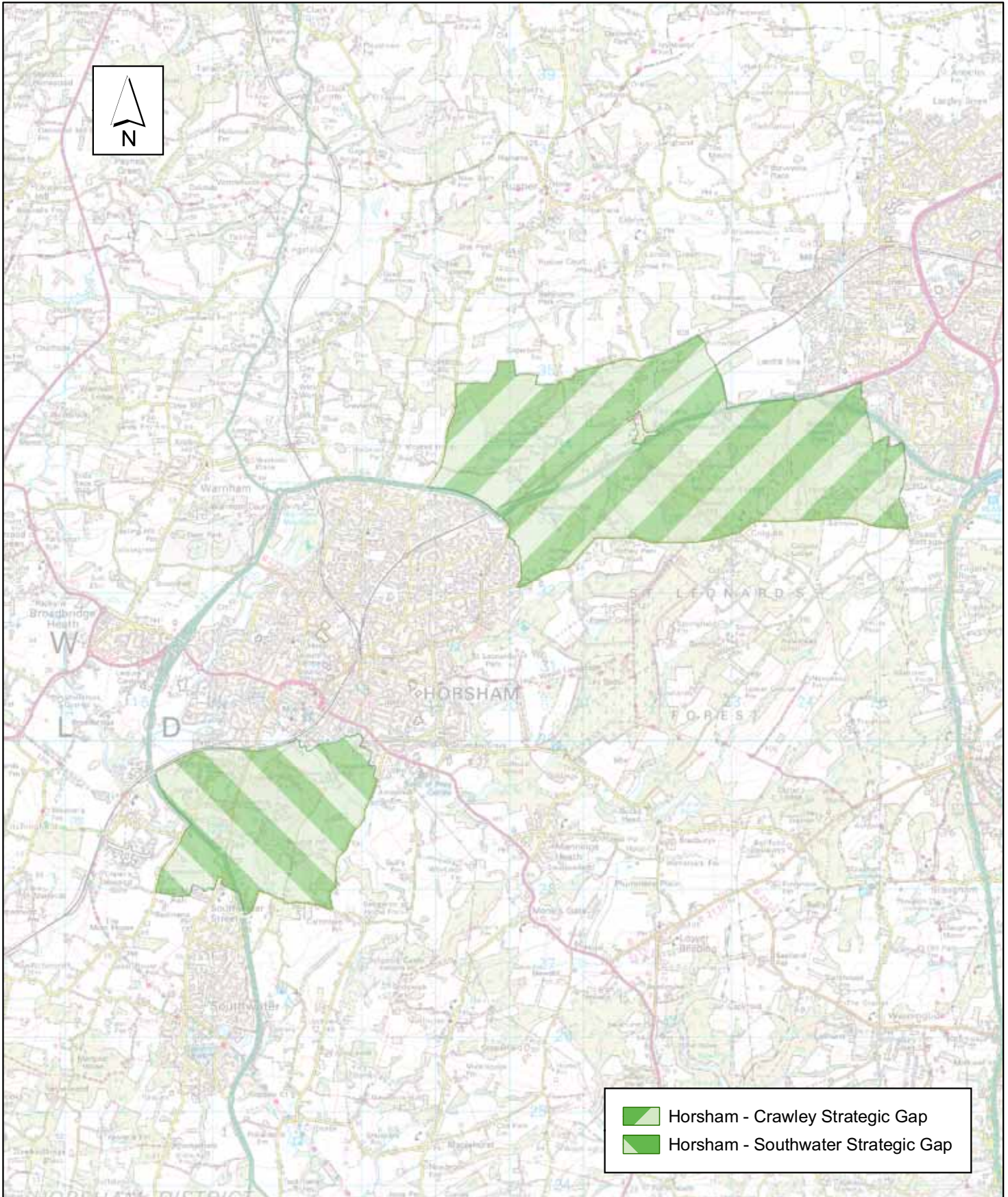
Respondent requests removal of the Employment Protection Zone designations at Huffwood Trading Estate, Gillmans Industrial Estate and Daux Road Industrial Estate.

(See Map 5)



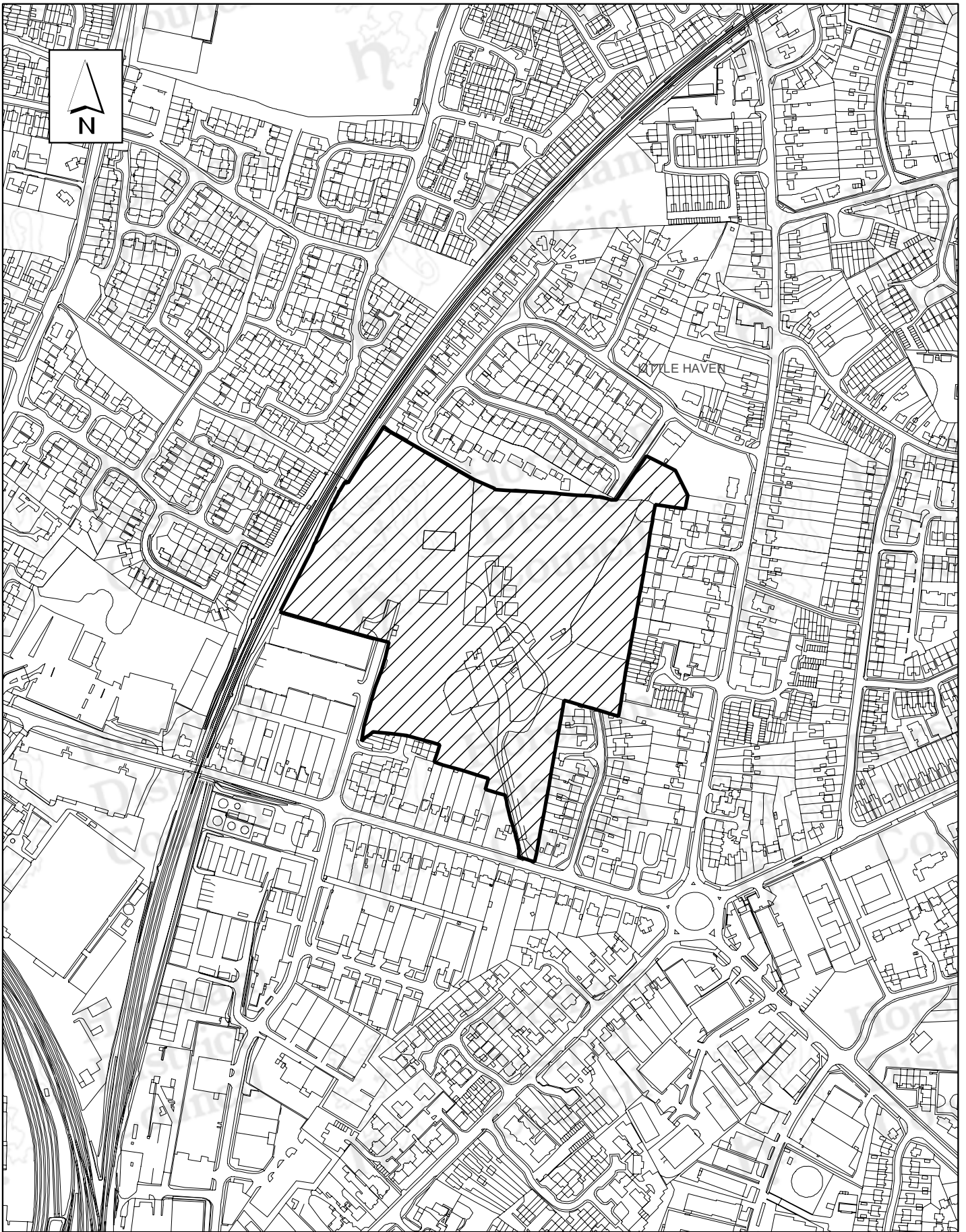
Alternative Policy Boundary Changes Map 1 - APB 5105 Horsham/Southwater Strategic Gap	
Reference No :	
Date : 30/10/06	Scale : not to scale
Drawing No :	Revisions :

Horsham District Council Park North, North Street, Horsham West Sussex, RH12 1RL. Head of Development, Ray Wright, Directorate of Planning
Reproduced from the Ordnance Survey map with the permission of the Controller of Her Majesty's Stationery Office. Crown Copyright 2000. Unauthorised reproduction infringes Crown Copyright and may lead to prosecution or civil proceedings. LA No.100018563



Alternative Policy Boundary Changes Map 2 - APB 5130 Horsham/Southwater & Horsham/Crawley Strategic Gaps	
Reference No :	
Date : 30/10/06	Scale : not to scale
Drawing No :	Revisions :

Horsham District Council Park North, North Street, Horsham West Sussex, RH12 1RL. Head of Development, Ray Wright, Directorate of Planning
Reproduced from the Ordnance Survey map with the permission of the Controller of Her Majesty's Stationery Office. Crown Copyright 2000. Unauthorised reproduction infringes Crown Copyright and may lead to prosecution or civil proceedings. LA No.100018563



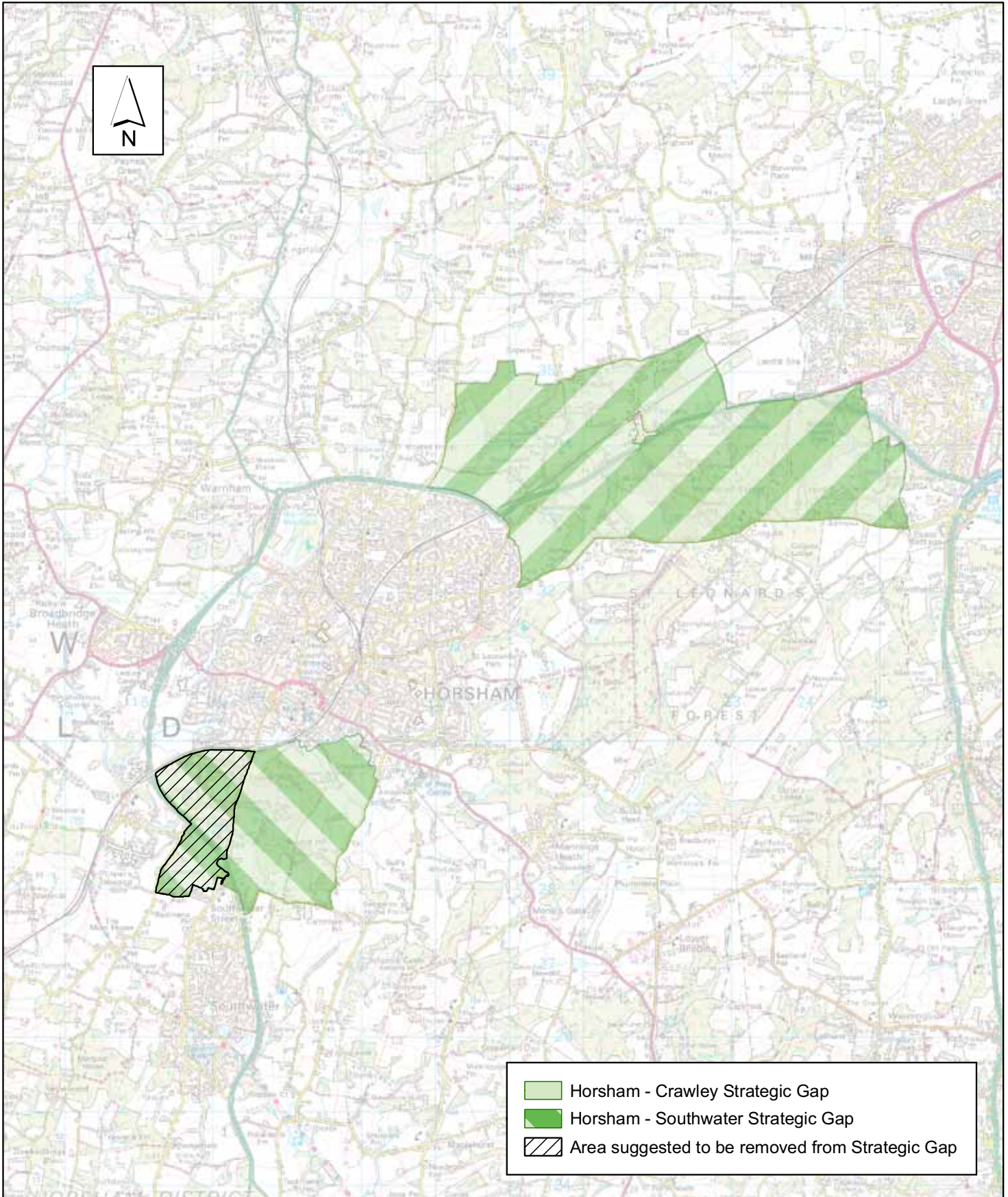
Alternative Policy Boundary Changes
Map 3 - APB 5057
 Area of Parsonage Farm, Horsham suggested as an
 Employment Protection Zone

Reference No :	
Date : 30/10/06	Scale : 1 :5000
Drawing No :	Revisions :

Horsham District Council

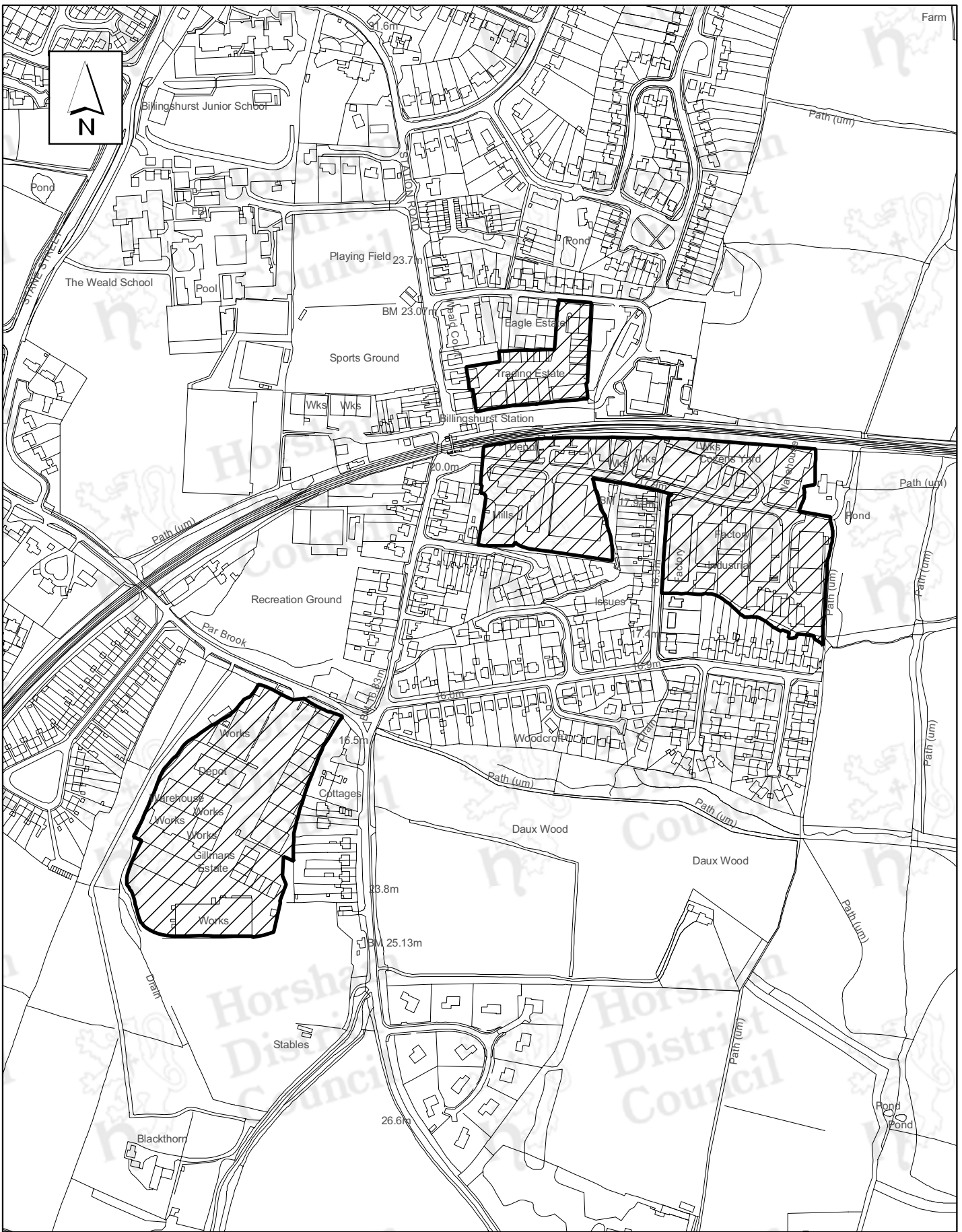
Park North, North Street, Horsham
 West Sussex, RH12 1RL.
 Head of Development, Ray Wright, Directorate of Planning

Reproduced from the Ordnance Survey map with the permission of the
 Controller of Her Majesty's Stationery Office. Crown Copyright 2000.
 Unauthorised reproduction infringes Crown Copyright and may lead to
 prosecution or civil proceedings. LA No.100018563



Alternative Policy Boundary Changes Map 4 - APB 5153 Horsham/Southwater Strategic Gap	
Reference No :	
Date : 30/10/06	Scale : not to scale
Drawing No :	Revisions :

Horsham District Council Park North, North Street, Horsham West Sussex, RH12 1RL. Head of Development, Ray Wright, Directorate of Planning	
Reproduced from the Ordnance Survey map with the permission of the Controller of Her Majesty's Stationery Office. Crown Copyright 2000. Unauthorised reproduction infringes Crown Copyright and may lead to prosecution or civil proceedings. LA No.100018563	



**Alternative Policy Boundary Changes
Map 5 - APB 5231**

Billingshurst Employment Protection Zones suggested
for deletion

Reference No :

Date : 30/10/06

Drawing No :

Scale : 1 :5000

Revisions :

Horsham District Council

Park North, North Street, Horsham
West Sussex, RH12 1RL.

Head of Development, Ray Wright, Directorate of Planning

Reproduced from the Ordnance Survey map with the permission of the
Controller of Her Majesty's Stationery Office. Crown Copyright 2000.
Unauthorised reproduction infringes Crown Copyright and may lead to
prosecution or civil proceedings. LA No.100018563